



# **Supporting Students with Medical Conditions Policy**

<b>Start Date:</b>	<b>Summer 2019</b>
<b>Date of Next Review:</b>	<b>Summer 2021</b>
<b>Author:</b>	<b>Mrs M Goodes</b>
<b>Responsible Committee:</b>	<b>Education Committee</b>

#### DfE guidance

Governing bodies should ensure that all schools develop a policy for supporting students with medical conditions that is reviewed regularly and is readily accessible to parents and school staff.

Governing bodies should ensure that the arrangements they set up include details on how the school's policy will be implemented effectively, including a named person who has overall responsibility for policy implementation.

Details should include:

- who is responsible for ensuring that sufficient staff are suitably trained,
- a commitment that all relevant staff will be made aware of the child's condition,
- cover arrangements in case of staff absence or staff turnover to ensure someone is always available,
- briefing for supply teachers,
- risk assessments for school visits, holidays, and other school activities outside of the normal timetable,
- monitoring of individual healthcare plans.

#### **This school is an inclusive community that supports and welcomes students with medical conditions.**

- This school is welcoming and supportive of students with medical conditions. It provides children with medical conditions with the same opportunities and access to activities (both school based and out-of-school) as other students. No child will be denied admission or prevented from taking up a place in this school because arrangements for their medical condition have not been made.
- This school will listen to the views of students and Parents/carers.
- Students and Parents/carers feel confident in the care they receive from this school and the level of that care meets their needs.
- Staff understand the medical conditions of students at this school and that they may be serious, adversely affect a child's quality of life and impact on their ability and confidence
- All staff understand their duty of care to children and young people and know what to do in the event of an emergency.
- The whole school & local health community understand and support the medical conditions policy.
- This school understands that all children with the same medical condition will not have the same needs, our school will focus on the needs of each individual child.
- The school recognises its duties as detailed in Section 100 of the Children and Families Act 2014. (Other related legislation is referenced in DfE guidance p21). Some children with medical conditions may be considered to be disabled under the definition set out in the Equality Act 2010. Where this is the case, this school complies with their duties under that Act. Some may also have special educational needs (SEN) and may have a statement, or Education, Health and Care (EHC) plan which brings together health and social care needs, as well as their special educational provision. For children with SEN, this policy should be read in conjunction with the Special educational needs and disability (SEND) code of practice.

#### **This school's medical conditions policy is drawn up in consultation with a wide range of local key stakeholders within both the school and health settings.**

- Stakeholders include students, parent/carers, school nurse, school staff, governors, and relevant local health specialist services.

#### **The medical conditions policy is supported by a clear communication plan for staff, parent/carers and other key stakeholders to ensure its full implementation.**

- Students, parent/carers, relevant local healthcare staff, and other external stakeholders are informed of and reminded about the medical conditions policy through clear communication channels.

#### **All staff understand and are trained in what to do in an emergency for children with medical conditions at this school.**

- All school staff, including temporary or supply staff, are aware of the medical conditions at this school and understand their duty of care to students in an emergency.
- All staff receive training in what to do in an emergency and this is refreshed at least once a year.

- All children with medical conditions that are complex, long-term or where there is a high risk that emergency intervention will be required at this school have an individual healthcare plan (HCP)<sup>1</sup>, which explains what help they need in an emergency. The HCP will accompany a student should they need to attend hospital. Parental permission will be sought and recorded in the HCP for sharing the HCP within emergency care settings.
- This school makes sure that all staff providing support to a student have received suitable training and ongoing support to ensure that they have confidence to provide the necessary support and that they fulfil the requirements set out in the student's HCP. This should be provided by the specialist nurse/school nurse/other suitably qualified healthcare professional and/or parent/carer. The specialist nurse/school nurse/other suitably qualified healthcare professional will confirm their competence and this school keeps an up to date record of all training undertaken and by whom.
- This school had chosen to hold an emergency salbutamol inhaler for use by students who have been prescribed a reliever inhaler and for whom parental consent for its use has been obtained. (see appendix 3 for further information)
- This school has chosen not to hold an emergency salbutamol inhaler for use by students.

**All staff understand and are trained in the school's general emergency procedures.**

- All staff, including temporary or supply staff should be aware of the content of this policy, know what action to take in an emergency and receive updates at least yearly. School nurses will provide annual training for common conditions e.g. asthma, allergies, epilepsy and diabetes.<sup>2</sup>
- If a student needs to attend hospital, a member of staff (preferably known to the student) will stay with them until a parent/carer arrives, or accompany a child taken to hospital by ambulance. They will not take students to hospital in their own car.

**This school has clear guidance on providing care and support and administering medication at school.**

- This school understands the importance of medication being taken and care received as detailed in the student's HCP.
- Medication will only be administered when it would be detrimental to a child's health or school attendance not to do so.
- This school will make sure that there are sufficient members of staff who have been trained to administer the medication and meet the care needs of an individual child. This school will ensure that there are sufficient numbers of staff trained to cover any absences, staff turnover and other contingencies. This school's governing body has made sure that there is the appropriate level of insurance and liability cover in place.<sup>3</sup>
- This school will not give medication (prescription or non-prescription) to a child under 16 without a parent's written consent except in exceptional circumstances, and every effort will be made to encourage the student to involve their parent/carer, while respecting their confidentiality.
- When administering medication, for example pain relief, this school will check the maximum dosage and when the previous dose was given. Parents/carers will be informed.

---

<sup>1</sup> An example template for an HCP has been produced by DfE - see template A.

<https://www.gov.uk/government/publications/supporting-students-at-school-with-medical-conditions--3>

<sup>2</sup> For students requiring insulin injections/insulin via pumps or blood glucose monitoring in schools the Paediatric Diabetes Team will provide this level of training and education.

<sup>3</sup> For school's covered by HCC's insurance where an IHCP is in place; parents have consented for the school to administer medication / meet other support needs as part of that plan; trained staff undertake these support needs and record keeping in relation to administration is robust then liability cover would be in place for common treatments administered by staff. (e.g. in relation to oral medication, inhalers, epi-pens, pre-packaged doses via injection etc.)

The insurance section have a detailed list of treatments which are covered, if you have students with significant medical needs contact [insurance@hertfordshire.gov.uk](mailto:insurance@hertfordshire.gov.uk) or by phone on 01992 555480 for further advice and to ensure coverage.

Where schools are not covered by HCC's insurance they should check with their own insurers.

- Parents/carers at this school understand that they should let the school know immediately if their child's needs change.
- If a student misuses their medication, or anyone else's, their parent/carer is informed as soon as possible and the school's disciplinary procedures are followed.

**This school has clear guidance on the storage of medication and equipment at school.**

- This school makes sure that all staff understand what constitutes an emergency for an individual child and makes sure that emergency medication/equipment, e.g. asthma inhalers, epi-pens etc. are readily available wherever the child is in the school and on off-site activities, and are not locked away.
- Students may carry their own EpiPen or insulin medication/equipment, or they should know exactly where to access it. Those students deemed competent to carry their own EpiPen or insulin medication/equipment with them will be identified and recorded through the student's HCP in agreement with parents/carers.
- Students cannot carry controlled drugs, this school will store controlled drugs securely in a non-portable container, with only named staff having access. Staff at this school can administer a controlled drug to a student once they have had specialist training and parental consent.
- This school will make sure that all medication is stored safely, and that students with medical conditions know where they are at all times and have access to them immediately. Under no circumstances will medication be stored in first aid boxes.
- This school will only accept medication that is in date, labelled and in its original container including prescribing instructions for administration. The exception to this is insulin, which though must still be in date, will generally be supplied in an insulin injector pen or a pump.
- Parents/carers are asked to collect all medications/equipment at the end of the school year, and to provide new and in-date medication at the start of each school year.
- This school disposes of needles and other sharps in line with local policies. Sharps boxes are kept securely at school and will accompany a child on off-site visits. They are collected and disposed of in line with local authority procedures.

**This school has clear guidance about record keeping.**

- As part of the school's admissions process and annual data collection exercise parents/carers are asked if their child has any medical conditions. These procedures also cover transitional arrangements between schools.
- This school uses an HCP to record the support an individual student needs around their medical condition. The HCP is developed with the student (where appropriate), parent/carer, designated named member of school staff, specialist nurse (where appropriate) and relevant healthcare services. Where a child has SEN but does not have a statement or EHC plan, their special educational needs are mentioned in their IHCP. Appendix 2 is used to identify and agree the support a child needs and the development of an IHCP.
- This school has a centralised register of HCPs, and an identified member of staff has the responsibility for this register.
- HCPs are regularly reviewed, at least every year or whenever the student's needs change.
- The student (where appropriate) parents/carers, specialist nurse (where appropriate) and relevant healthcare services hold a copy of the HCP. Other school staff are made aware of and have access to the HCP for the students in their care.
- This school makes sure that the student's confidentiality is protected.
- This school seeks permission from parents/carers before sharing any medical information with any other party.
- This school keeps an accurate record of all medication administered, including the dose, time, date and supervising staff.

**This school ensures that the whole school environment is inclusive and favourable to students with medical conditions. This includes the physical environment, as well as social, sporting and educational activities.**

- This school is committed to providing a physical environment accessible to students with medical conditions and students are consulted to ensure this accessibility. This school is also committed to an accessible physical environment for out-of-school activities.
- This school makes sure the needs of students with medical conditions are adequately considered to ensure their involvement in structured and unstructured activities, extended school activities and residential visits.
- All staff are aware of the potential social problems that students with medical conditions may experience and use this knowledge, alongside the school's anti bullying policy, to help prevent and deal with any problems. They use opportunities such as PSHE and science lessons to raise awareness of medical conditions to help promote a positive environment.
- This school understands the importance of all students taking part in off site visits and physical activity and that all relevant staff make reasonable and appropriate adjustments to such activities in order they are accessible to all students. This includes out-of-school clubs and team sports. Risk assessments will be conducted as part of the planning process to take account of any additional controls required for individual student needs.
- This school understands that all relevant staff are aware that students should not be forced to take part in activities if they are unwell. They should also be aware of students who have been advised to avoid/take special precautions during activity, and the potential triggers for a student's medical condition when exercising and how to minimise these.

**This school makes sure that students have the appropriate medication/equipment/food with them during physical activity and offsite visits.**

- This school makes sure that students with medical conditions can participate fully in all aspects of the curriculum and enjoy the same opportunities at school as any other child, and that appropriate adjustments and extra support are provided.
- All school staff understand that frequent absences, or symptoms, such as limited concentration and frequent tiredness, may be due to a student's medical condition.
- This school will not penalise students for their attendance if their absences relate to their medical condition.
- This school will refer students with medical conditions who are finding it difficult to keep up educationally to the SENCO who will liaise with the student (where appropriate), parent/carer and the student's healthcare professional.
- Students at this school learn what to do in an emergency.
- This school makes sure that a risk assessment is carried out before any out-of-school visit, including work experience and educational placements. The needs of students with medical conditions are considered during this process and plans are put in place for any additional medication, equipment or support that may be required.

**This school is aware of the common triggers that can make common medical conditions worse or can bring on an emergency. The school is actively working towards reducing or eliminating these health and safety risks and has a written schedule of reducing specific triggers to support this.**

- This school is committed to identifying and reducing triggers both at school and on out-of-school visits.
- School staff have been given training and written information on medical conditions which includes avoiding/reducing exposure to common triggers.
- The HCP details an individual student's triggers and details how to make sure the student remains safe throughout the whole school day and on out-of-school activities. Risk assessments are carried out on all out-of-school activities, taking into account the needs of students with medical needs.

- This school reviews all medical emergencies and incidents to see how they could have been avoided, and changes school policy according to these reviews.

**Each member of the school and health community knows their roles and responsibilities in maintaining and implementing an effective medical conditions policy.**

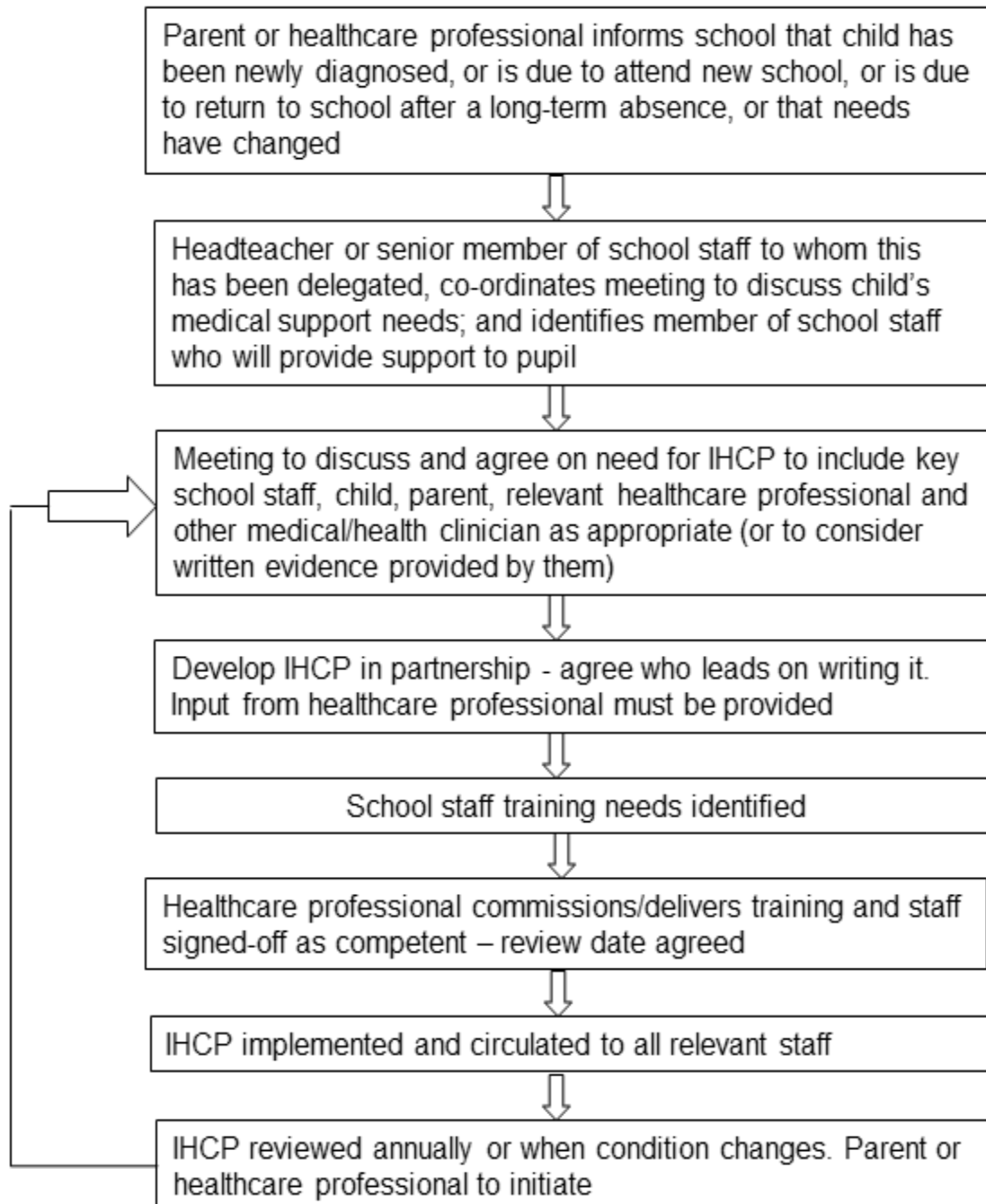
- This school works in partnership with all relevant parties including the student (where appropriate), parent/carer, school's governing body, all school staff, employers and healthcare professionals to ensure that the policy is planned, implemented and maintained successfully.
- Key roles and responsibilities are outlined in Appendix 1.

**The medical conditions policy is regularly reviewed, evaluated and updated. Updates are produced every year.**

- In evaluating the policy, this school seeks feedback from key stakeholders including students, parents/carers, school nurses, specialist nurses and other relevant healthcare professionals, school staff, local emergency care services and governors. The views of students with medical conditions are central to the evaluation process. Should parents and students be dissatisfied with the support provided they should discuss these concerns to the Principal.

## Appendix 1

### Model process for developing individual healthcare plans



## Appendix 2

### Roles and responsibilities

**Governing bodies** – must make arrangements to support students with medical conditions in school, including making sure that a policy for supporting students with medical conditions in school is developed and implemented. They should ensure that students with medical conditions are supported to enable the fullest participation possible in all aspects of school life. Governing bodies should ensure that sufficient staff have received suitable training and are competent before they take on responsibility to support children with medical conditions. They should also ensure that any members of school staff who provide support to students with medical conditions are able to access information and other teaching support materials as needed.

**Principal** – should ensure that their school's policy is developed and effectively implemented with partners. This includes ensuring that all staff are aware of the policy for supporting students with medical conditions and understand their role in its implementation. Principals should ensure that all staff who need to know are aware of the child's condition. They should also ensure that sufficient trained numbers of staff are available to implement the policy and deliver against all individual healthcare plans, including in contingency and emergency situations. Principals have overall responsibility for the development of individual healthcare plans. They should also make sure that school staff are appropriately insured and are aware that they are insured to support students in this way. They should contact the school nursing service in the case of any child who has a medical condition that may require support at school, but who has not yet been brought to the attention of the school nurse.

**School staff** – any member of school staff may be asked to provide support to students with medical conditions, including the administering of medicines, although they cannot be required to do so. Although administering medicines is not part of teachers' professional duties, they should take into account the needs of students with medical conditions that they teach. School staff should receive sufficient and suitable training and achieve the necessary level of competency before they take on responsibility to support children with medical conditions. Any member of school staff should know what to do and respond accordingly when they become aware that a student with a medical condition needs help.

**School Medical Officer** – every school has access to school first aid services. They are responsible for notifying the school when a child has been identified as having a medical condition which will require support in school. Wherever possible, they will do this before the child starts at the school. They would not usually have an extensive role in ensuring that schools are taking appropriate steps to support children with medical conditions, but may support staff on implementing a child's individual healthcare plan and provide advice and liaison, for example on training. School medical officers can liaise with lead clinicians locally on appropriate support for the child and associated staff training needs - for example, there are good models of local specialist nursing teams offering training to local school staff, hosted by a local school. Community nursing teams will also be a valuable potential resource for a school seeking advice and support in relation to children with a medical condition.

**Other healthcare professionals** - including GPs, paediatricians, nurse specialists/community paediatric nurses – should notify the school medical officer and work jointly when a child has been identified as having a medical condition that will require support at school. They may provide advice on developing healthcare plans. Anyone dealing with the medical care of a student in school should contact the named school medical officer for that school to ensure a coordinated approach.

**Students** – with medical conditions will often be best placed to provide information about how their condition affects them. They should be fully involved in discussions about their medical support needs and contribute as much as possible to the development of, and comply with, their individual healthcare plan. Other students will often be sensitive to the needs of those with medical conditions.

**Parents/carers** – should provide the school with sufficient and up-to-date information about their child's medical needs. They may in some cases be the first to notify the school that their child has a medical condition. Parents/carers are key partners and should be involved in the development and review of their



child's individual healthcare plan, and may be involved in its drafting. They should carry out any action they have agreed to as part of its implementation, e.g., provide in-date medicines and equipment and ensure they or another nominated adult are contactable at all times.

### **Appendix 3**

The school has chosen to hold an emergency salbutamol inhaler for use by students who have been prescribed a reliever inhaler and for whom written parental consent for its use has been obtained.

The protocol for the use of this inhaler is detailed below, following the Department of Health Guidance on the use of emergency salbutamol inhalers in schools.

[https://www.gov.uk/government/uploads/system/uploads/attachment\\_data/file/360585/guidance\\_on\\_use\\_of\\_emergency\\_inhalers\\_in\\_schools\\_October\\_2014.pdf](https://www.gov.uk/government/uploads/system/uploads/attachment_data/file/360585/guidance_on_use_of_emergency_inhalers_in_schools_October_2014.pdf)

The use, storage, care and disposal of the inhaler and spacers will follow the school's policy on supporting students with medical conditions. Specific guidance on storage and care is provided on page 12 of the Department of Health Guidance on the use of emergency salbutamol inhalers in schools.

The school hold a register of children prescribed an inhaler and this list is kept with the emergency inhaler.

Written parental consent is sought for the use of the emergency inhaler. Where consent is received the use of the emergency inhaler will be included in the students' HCP.

Parents/carers will be informed if their child has used the emergency inhaler.

The school's two volunteers for ensuring this protocol is followed are **Mr P Bezer and Mrs R Cross** appropriate support and training has been provided in line with the school's policy on supporting students with medical conditions.