



Labour Market Information

LMI can help you to make a decision about your future career based on trends in employment, average incomes and helping you to see where most of the jobs are now and where they are predicting growth in the future. LMI can sometimes be overwhelming. Target Careers have some great dos and don'ts when looking at the data.



Do... look at the data if you're making tricky decisions

Information about the job market may help with making choices between equally appealing career or subject options. If you're struggling to choose between job areas or degree courses that would be equally enjoyable, you might find it helpful to see which ones are associated with the highest salaries or lowest unemployment rates.

Do... take inspiration if you need career ideas

Why not take inspiration from the different careers mentioned? For example, perhaps you read through the skills shortages information and realised that you'd never looked into healthcare careers, or that you don't really know what nuclear decommissioning involves. Now is a good time to find out.

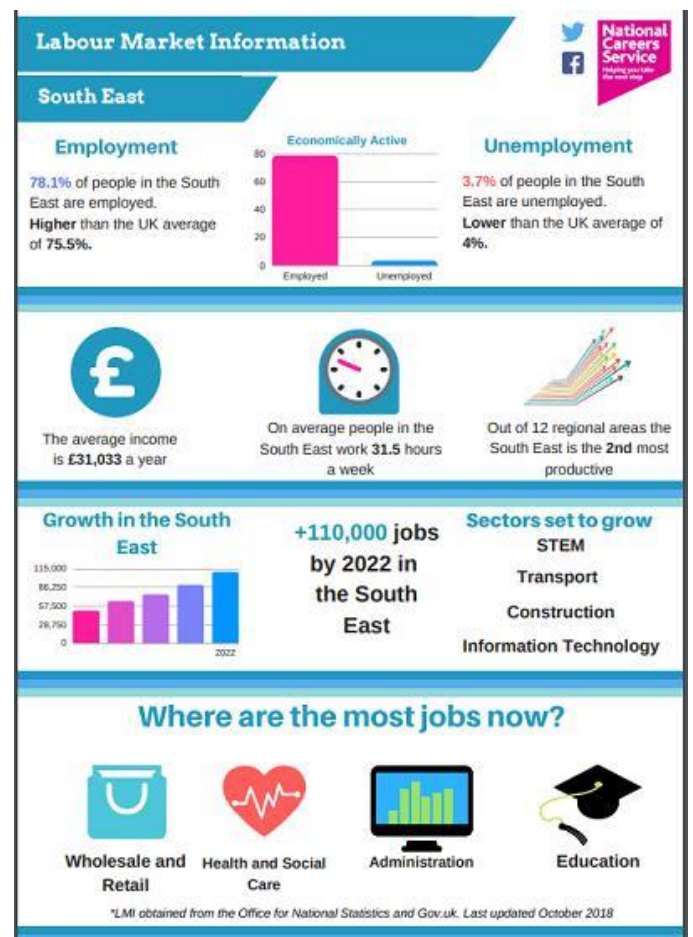
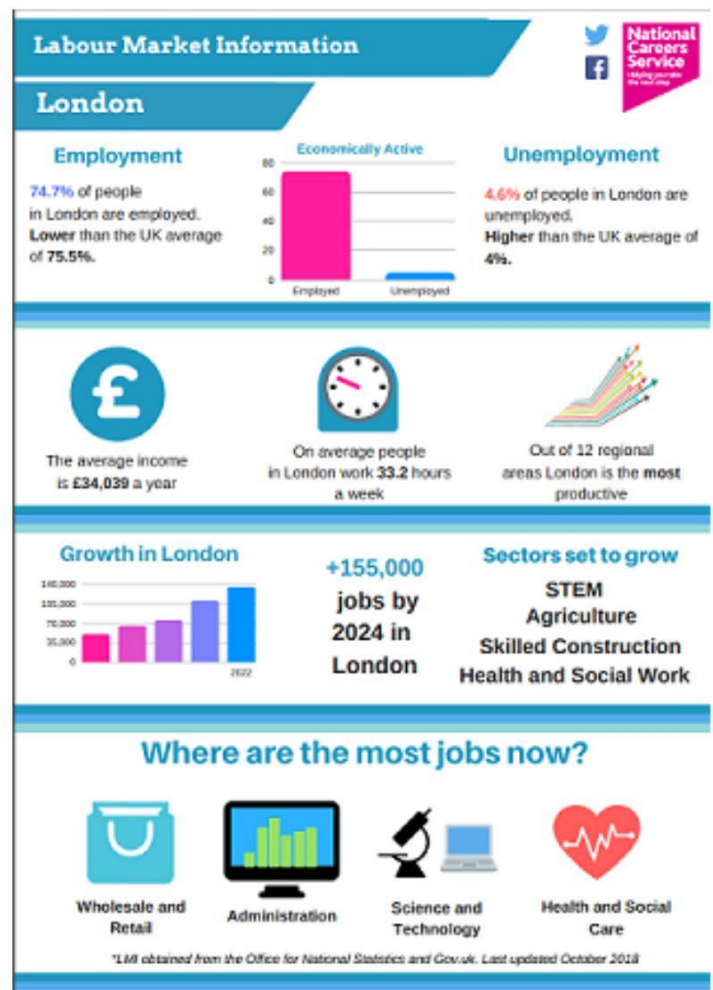
Don't... assume that the future will look like the past

Job market information shows what has happened in the past. It isn't a crystal ball to predict the future. Economies run in cycles and some industries, such as construction, are particularly sensitive to upturns and downturns. This can result in jobs and training places being cut in times of recession and skills shortages emerging during boom times. Longer term changes can take place regardless of the economic cycle. Jobs in a particular field can move abroad or become less numerous as technology changes. Public sector jobs can be cut by government. Changes in immigration can affect whether roles can be filled by workers from overseas.

Skills shortages, as the name suggests, are typically about the need for staff with qualifications and experience under their belt, rather than new starters. By the time you've gained these, the picture may have changed.

The following posters contain information taken from the latest update from the Office for National Statistics

- <https://www.ons.gov.uk/>





Year 13 students are busily writing their personal statements and thinking about their next step after the sixth form.

Degree apprenticeships are a new type of programme offered by some universities. Students can achieve a full bachelor's or master's degree as part of their apprenticeship.

These programmes are being developed by employers, universities, and professional bodies working in partnership.

Degree apprenticeships combine working with studying part-time at a university. Apprentices are employed throughout the programme, and spend part of their time at university and the rest with their employer. This can be on a day-to-day basis or in blocks of time, depending on the programme and requirements of the employer.

They can take between three to six years to complete, depending on the course level

Degree apprenticeships are still quite new, so there are a limited number of vacancies. It's anticipated that the number of vacancies will grow over the next year or two.



Here are some examples of current degree apprenticeships on offer

Broadcast Engineering Degree Apprenticeship

- Are you fascinated about the way things work?
- Do you love solving problems?
- Do you want an amazing experience, a salary, and get to go to university as well?

This is an exciting opportunity to get into the world of work, earn money, and gain a degree in Broadcast Engineering. The degree is fully funded, including your accommodation whilst at university.

Salary: £14,250 (plus £4,560 if role based in London)

Main Responsibilities

You'll get to work at the heart of technology at the BBC and with their industry partners, all while studying for a degree in Broadcast Engineering.

Your degree

You'll study for a bachelor's degree (Hons) – with tailored courses in:

- Computer networks, networking and IP distribution
- Electronics, power and transmission
- Software programming, application development and databases
- Audio and video signals and systems, processing and encoding.

Through a series of university taught modules and industrial experience we will prepare you as the new generation of Broadcast Engineers to help build and support the future business. You'll develop an excellent theoretical and practical understanding of operational and technical systems, as well as equipment and their use in the fast-moving broadcasting industry.

Your work placements

You'll have a main BBC base, but you will spend periods away on study.

You will rotate through engineering teams responsible for installing, fixing and maintaining the studios and equipment, and will also do placements with other departments working on engineering projects.

You might have the opportunity to work with not only the BBC, but also some external partners.



Are you the right candidate?

You love solving problems and seeing how things work. You like having a go at fixing things, or designing and building things yourself. We're not looking for work experience but throughout the application process we'll be asking for evidence that shows your passion for technology.

Throughout the application process, we will be assessing the following:

- Problem solving
- Practical application
- Collaboration
- Communication
- Time Management
- Proactivity
- Resilience

As this is a degree scheme they need strong academic performance. The minimum academic criteria is at least 112 UCAS points, including a Maths A level or equivalent qualification or closely related subject. To be eligible for this scheme, you will also need to have the right to work in the UK.



You will need to provide a written statement of why you think you are suitable for the role.

If you progress to the next stage you will then be invited in for an assessment centre which takes place in Birmingham around March 2019 or earlier. We aim to inform all candidates whether they are successful or not by end of March 2019.

About the BBC

Be part of something special. Join the BBC.

The BBC is the world's leading public service broadcaster. Funded primarily through the television licence fee, the BBC provides audiences in the UK with high quality and distinctive services across television, radio and online. In the UK the BBC provides 10 network television services, 10 network radio services, 46 radio services in the nations and regions of the UK, plus an extensive online presence. The BBC also delivers impartial news and information to audiences around the globe through the World Service.

Civil Engineering Degree Apprenticeship



Their Civil Engineering Degree Apprenticeship offers the opportunity to be part of the once in a lifetime Hinkley Point C project. Hinkley Point C (HPC) will be the first in a new generation of nuclear power stations in the UK and one of the largest

infrastructure projects in Europe. Sizewell C (SZC) will be the second of this generation to be built in the UK, following the construction of HPC.

During the five year programme you'll learn from industry experts and gain valuable experience all whilst studying towards a Civil Engineering Site Management degree.

You'll study for a Civil Engineering Site Management degree, over five years, whilst working on Hinkley Point C power station in roles such as construction, safety, environment and surveillance, to name a few. During the scheme you'll follow the Civil Engineering Site Management Apprentice Standard, which is a formal degree apprenticeship.

The majority of your tuition will fall within four, two-week residential periods, delivered by the University of Exeter. You'll also study elements of the degree during time at work. The residential periods will be structured around your modules and will include lectures, seminars and workshops. You'll have one to one support from an academic mentor and during these periods will also get time to socialise with your peers.

During your time working on Hinkley Point C, you'll take on tasks such as:

- Assisting design teams with civil engineering solutions
- Supervision of specialist contractors

- Contributing to the control of health and safety on the project
- Recording, control and reporting of progress on the project
- Contributing to the minimisation of the environmental impact of the project
- Controlling the quality of works on the project

As you progress through your apprenticeship you will gain more knowledge and experience. You'll use this to:

- Ensure that safe systems of work are in place on site and that all staff adhere to them
- Translate design information to construction teams so they can construct the project effectively and efficiently
- Manage the productivity on the site so that the project is completed on time
- Ensure that the project is completed to the specification and quality needed by the client
- Manage the activity on site in a way that adheres to cost and contract constraints
- Ensure that the site has minimal negative impact on the environment and community
- Manage interfaces between stakeholders associated with the project

They also have one opportunity working on their transformational Sizewell C project. This will still include study at the University of Exeter and your attachments, whilst on the scheme, will be at HPC and Sizewell C. Due to the diversity of the scheme you will need to be based in the South West for the duration of the apprenticeship. Upon completion of the scheme your first substantive role would be working on Sizewell C based in the Suffolk/South East area. If you wish to be considered for this exciting opportunity please select this from the option on the application form.

What they're looking for

- Three A-Levels (at Grade C or above), including Maths and a science subject or A-Level Maths and a relevant BTEC Extended Diploma (2010) or a relevant BTEC Extended Diploma (2016), dependent on the modules studied. Full entry requirements can be viewed on the University of Exeter website [here](#).
- Ability to demonstrate enthusiasm for engineering in the nuclear industry.
- Clear ambition to develop a career within EDF Energy.
- Ability to engage people at all levels and work within a team.
- Ability to manage the responsibilities of both work and study.

Where we could take you:

On completion of your apprenticeship you'll have a full BEng Civil Engineering Site Management degree from the University of Exeter and 5 years of practical work experience with EDF Energy. You'll also have the potential to gain your IEng qualification with the



Institute of Civil Engineers (ICE). You'll be in the best possible position to progress your career and develop the 9 attributes that define the qualities of a professionally qualified Civil Engineer: knowledge and understanding of Engineering, technical and practical application of Engineering, management and leadership, independent judgement and responsibility, commercial ability, health, safety and welfare, sustainable development, interpersonal skills, communication and professional commitment.

What's in it for you?

- £17,335 a year (starting salary) with annual pay increases
- Help towards travel costs
- Generous pension scheme
- 25 days' paid holiday
- Flexible benefits
- Support from an EDF Energy Mentor, Line Manager and Buddy throughout the apprenticeship

About EDF Energy

EDF Energy is a core part of the EDF Group, one of the largest energy companies in Europe with key business operations in the UK, France, Italy and Belgium. We're the UK's largest producer of low-carbon electricity, the biggest supplier of electricity by volume in Great Britain, the largest supplier to British businesses and we employ more than 13,000 people. We operate nuclear, coal and gas power stations, wind farms, and combined heat & power plants. We have a focus on safe, dependable energy generation and an ethos of service excellence. We are playing a leading role in new nuclear build in the UK to secure a bright future for the combined business and its employees.



It is important that students and parents go to Sixth Form and College Open days to help make the best decision for the future after year 11.

Haileybury Turnford Sixth Form

Thursday 22nd November, 5:30-7:30pm

Hertford Regional College

Broxbourne and Ware Campus

Wednesday 10th October, 5:30-8.30pm

Capel Manor College

Saturday 13th October, 10-3pm

Harlow College

Tuesday 16th October, 5:30-7:30pm

Stansted Airport College

Tuesday 6th November 5:30-8:30pm

To search for nationwide apprenticeships visit:

<http://www.getingofar.gov.uk/>

If you have any questions or queries relating to careers please contact the careers leader Kate Ward on wardk@haileyburyturnford.com