

HaileyburyTurnford

**SIXTH FORM APPLICATION
PACK
(External Students)
2019-2021**

Student name: _____

Current school: _____

Ambition · Pride · Success



The process on admissions to Haileybury Turnford Sixth Form

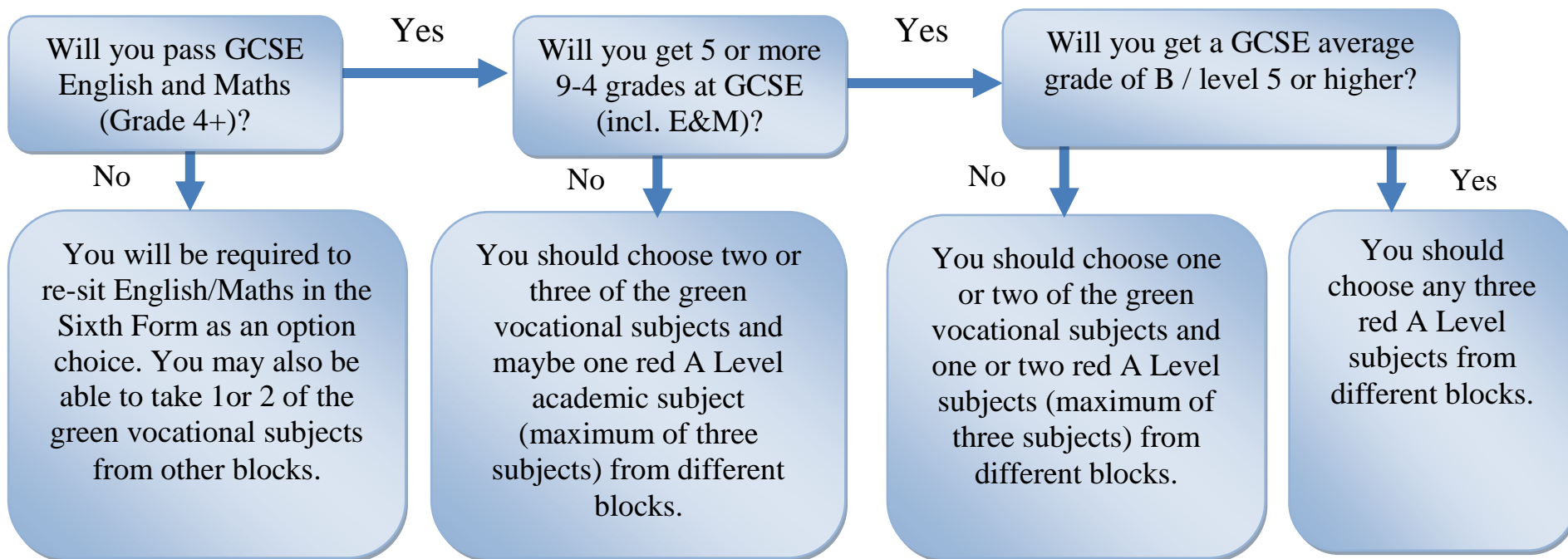
Stages of application:

1. Students must submit an application by **Monday 17th December**
2. Students must attend an application review meeting (in February/March) to discuss initial choices from their application which will be matched to current predicted grades to ensure that choices are realistic and entry requirements are achievable (parents are more than welcome to attend)
3. Students may need to attend a follow up meeting in June – where final option choices will be discussed
4. Induction Days are mandatory on 2nd & 3rd July
5. Students will receive a final letter home in July outlining what the school is prepared to offer them (subject to GCSE results in August)

What GCSEs do I need to take A Levels or vocational courses?

Deciding which subjects you would like to take can be very difficult. On the next page is a **guide** to help match your predicted achievement at GCSE to the type of courses you can take in the Sixth Form. The options book describes the course and content, as well as the particular requirements needed to gain entry.

How can I decide what subjects are suitable for me?



Block 1	Block 2	Block 3	Block 4	Block 5
A Level Biology	A Level Economics	CTEC ICT	A Level English Literature	BTEC Business Studies
A Level Media	A Level Chemistry	A Level Physics	A Level Accounting	A Level Business
Children's Play, Learning and Development	A Level Fine Art	A Level Sociology	A Level Geography	A Level Maths
A Level Engineering	CTEC Sport Studies	BTEC Drama	BTEC Business Studies	A Level Psychology
BTEC Public Services	GCSE English Re-sit	A Level History	A Level Product Design	A Level Photography
BTEC Dance		GCSE Maths Re-sit	BTEC Health & Social Care	

Please make sure that you also check the entry criteria for each individual subject.

EXTERNAL APPLICATION FORM HAILEYBURY TURNFORD SIXTH FORM 2019-2021

STUDENT NAME: _____ **DATE OF BIRTH:** _____

HOME ADDRESS: _____

POSTCODE: _____

HOME No: _____

STUDENT MOBILE No: _____ **PARENT MOBILE No:** _____

STUDENT EMAIL: _____

PARENT EMAIL: _____

LEVEL 3 SUBJECT COURSES:

Please mark with an "x" up to **4 choices** of subjects that you wish to study.

Name of qualification	Type of Qualification	"x" for choice	Name of qualification	Type of Qualification	"x" for choice
Accounting and Finance	A Level (counts as 1 choice)		Geography	A Level (counts as 1 choice)	
Art & Design – Fine Art	A Level (counts as 1 choice)		Health & Social Care	Vocational (counts as 1 choice)	
Art & Design – Photography	A Level (counts as 1 choice)		History	A Level (counts as 1 choice)	
Biology	A Level (counts as 1 choice)		ICT	Vocational (counts as 1 choice)	
Business	A Level (counts as 1 choice)		Mathematics	A Level (counts as 1 choice)	
Business Extended Certificate	Vocational (counts as 1 choice)		Further Maths	AS Level (does not count as a choice)	
Chemistry	A Level (counts as 1 choice)		Media Studies	Vocational (counts as 1 choice)	
Children’s Play, Learning and Dev.	Vocational (counts as 1 choice)		Music	Vocational (counts as 1 choice)	
Dance	Vocational (counts as 1 choice)		Physical Education	A Level (counts as 1 choice)	
D & T - Engineering	A Level (counts as 1 choice)		Physics	A Level (counts as 1 choice)	
D & T – Product Design	A Level (counts as 1 choice)		Psychology	A Level (counts as 1 choice)	
Drama and Theatre Studies	Vocational (counts as 1 choice)		Public Services	Vocational (counts as 1 choice)	
Economics	A Level (counts as 1 choice)		Sociology	A Level (counts as 1 choice)	
English Literature	A Level (counts as 1 choice)		Spanish	A Level (counts as 1 choice)	
French	A Level (counts as 1 choice)		Sports Studies	Vocational (counts as 1 choice)	

Please note – you are not signing up to these courses, this is your initial thoughts only and will focus you on finding out more about these courses from your teachers and Subject Leaders. Your form tutor is also an excellent person to speak to. Final subject courses will not be confirmed until your GCSE results are available.

Level 2 Courses:

Should you not perform as well as you had hoped at GCSE then we would also require students to attain their GCSE English and Mathematics at grade 4 or higher in Year 12. It is our aim that all students will leave the Sixth Form with GCSE English and Mathematics at grade 4 or higher. The decision on whether to take these will be made after GCSE results in August.

Please mail, email or hand deliver this form back to the School's reception desk **before Monday 17th December**. If you have any specific questions, please contact me through the school or preferably by email at shivalkarn@haileyburyturnford.com. Applications can also be emailed to this address.

What if my application is made after the deadline?

Your application will still be considered but may be rejected if we have already allocated our maximum amount of offers. We would encourage you to apply before the deadline where possible.

We look forward to exploring your future options with us.

Mrs N Shivalkar
Head of Sixth Form

