

HaileyburyTurnford

**SIXTH FORM APPLICATION
PACK
(External Students)
2021 – 2023**

Student name: _____

Current School: _____

Ambition · Pride · Success



The process of admissions to Haileybury Turnford Sixth Form

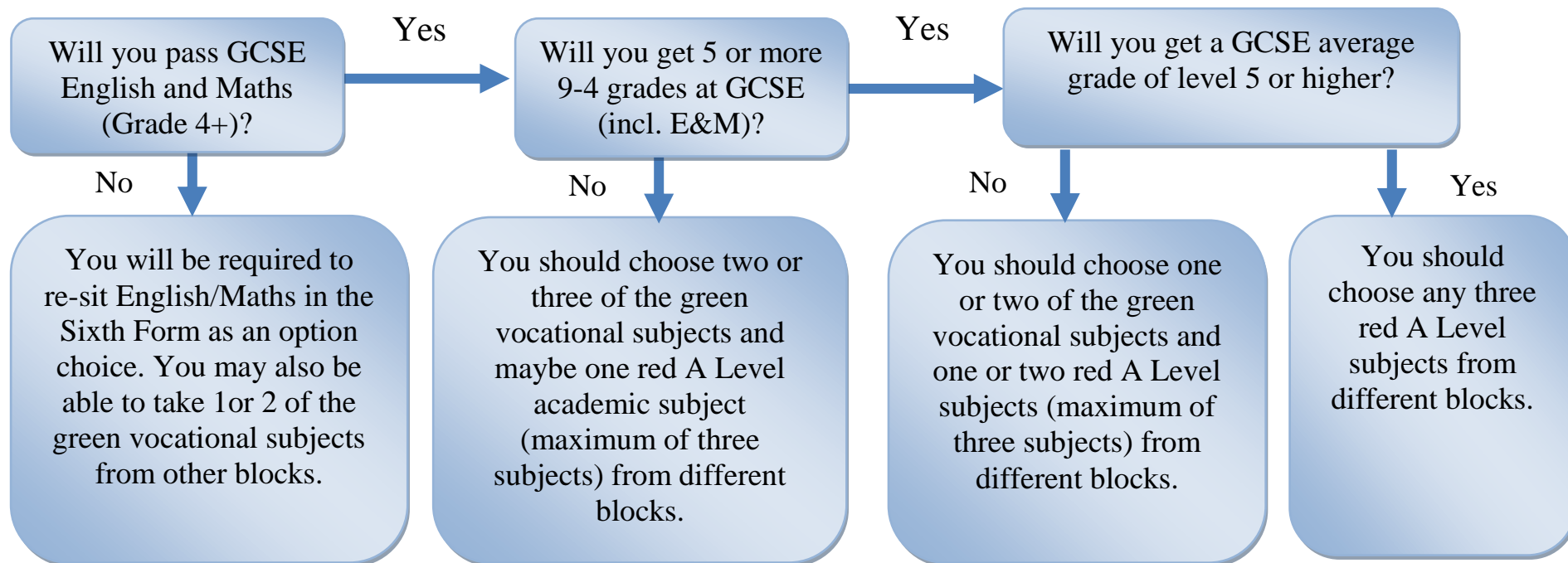
Stages of application:

1. Students must apply by **3.00pm Monday 14th December**
2. Students must attend an application review meeting (in February/March) to discuss initial choices from their application which will be matched to current predicted grades to ensure that choices are realistic and entry requirements are achievable (parents are more than welcome to attend)
3. Students will receive a final letter home in June outlining what the school is prepared to offer them (subject to their GCSE results in August)
4. Induction days will take place in July (dates to be confirmed)
5. On GCSE results day students will confirm their places as well as having a final opportunity to refine their choices

What GCSEs do I need to take A Levels or vocational courses?

Deciding which subjects, you would like to take can be very difficult. On the next page is a **guide** to help match your predicted achievement at GCSE to the type of courses you can take in the Sixth Form. The options book describes the course and content, as well as the particular requirements needed to gain entry.

How can I decide what subjects are suitable for me?



Block 1	Block 2	Block 3	Block 4	Block 5
A Level Biology	BTEC Children's Play, Learning and Development	BTEC ICT	A Level English Literature	BTEC Science
A Level Media	A Level Chemistry	A Level Physics	A Level Physical Education	A Level Business
A Level Economics	A Level Fine Art	A Level Sociology	A Level Product Design	A Level Maths
A Level Engineering	CTEC Sport Studies	BTEC Drama	BTEC Business Studies	A Level Psychology
BTEC Dance	A Level Spanish	A Level History	BTEC Health & Social Care	A Level Photography
BTEC Business Studies	A Level Accounting	A Level Geography		BTEC Music
		BTEC Psychology		GCSE English Re-sit
		GCSE Maths Re-sit		

Please make sure that you also check the entry criteria for each individual subject.

APPLICATION FORM HAILEYBURY TURNFORD SIXTH FORM 2021-2023

STUDENT NAME: _____ DATE OF BIRTH: _____

HOME ADDRESS: _____

POSTCODE: _____

HOME No: _____

STUDENT MOBILE No: _____ PARENT MOBILE No: _____

STUDENT EMAIL: _____

PARENT EMAIL: _____

LEVEL 3 SUBJECT COURSES:

Please mark with an "x" for **up to 3 choices** of subjects that you wish to study.

Name of qualification	Type of Qualification	"x" for choice	Name of qualification	Type of Qualification	"x" for choice
Accounting and Finance	A Level (counts as 1 choice)		Health & Social Care	Vocational (counts as 1 choice)	
Art & Design – Fine Art	A Level (counts as 1 choice)		History	A Level (counts as 1 choice)	
Art & Design – Photography	A Level (counts as 1 choice)		ICT	Vocational (counts as 1 choice)	
Biology	A Level (counts as 1 choice)		Mathematics	A Level (counts as 1 choice)	
Business A Level	A Level (counts as 1 choice)		Further Maths	AS Level (does not count as a choice)	
Business BTEC	Vocational (counts as 1 choice)		Media Studies	A Level (counts as 1 choice)	
Chemistry	A Level (counts as 1 choice)		Music	Vocational (counts as 1 choice)	
Children's Play, Learning and Dev.	Vocational (counts as 1 choice)		Physical Education	A Level (counts as 1 choice)	
Dance	Vocational (counts as 1 choice)		Physics	A Level (counts as 1 choice)	
D & T - Engineering	A Level (counts as 1 choice)		Psychology	A Level (counts as 1 choice)	
D & T – Product Design	A Level (counts as 1 choice)		Psychology BTEC	Vocational (counts as 1 choice)	
Drama and Theatre Studies	Vocational (counts as 1 choice)		Science BTEC	Vocational (counts as 1 choice)	
Economics	A Level (counts as 1 choice)		Sociology	A Level (counts as 1 choice)	
English Literature	A Level (counts as 1 choice)		Spanish	A Level (counts as 1 choice)	
Geography	A Level (counts as 1 choice)		Sports Studies	Vocational (counts as 1 choice)	

Please note – you are not signing up to these courses, this is your initial thoughts only and will focus you on finding out more about these options from your teachers and Subject Leaders. Your form tutor is also an excellent person to speak to. Subject choices will not be confirmed until your GCSE results are available.

Level 2 Courses:

Should you not perform as well as you had hoped at GCSE then we would also require students to re-sit their GCSE English and Mathematics at level 4 or higher in their Year 12 year. All students will endeavor to leave the Sixth Form with GCSE English and Mathematics level 4. The decision on whether to take these will be made after GCSE Results in August.

Please hand this form back to the Sixth Form Office, your Form tutor or Main Reception before **Monday 14th December**. If you have any specific questions, please contact me through the school or preferably by email at shivalkarn@haileyburyturnford.com

We look forward to exploring your future options with us.

Mrs N Shivalkar
Head of Sixth Form

