

HaileyburyTurnford

**SIXTH FORM APPLICATION  
PACK  
(External Students)  
2023 – 2025**

Student name: \_\_\_\_\_

Current School: \_\_\_\_\_

Ambition · Pride · Success



## The process of admissions to Haileybury Turnford Sixth Form

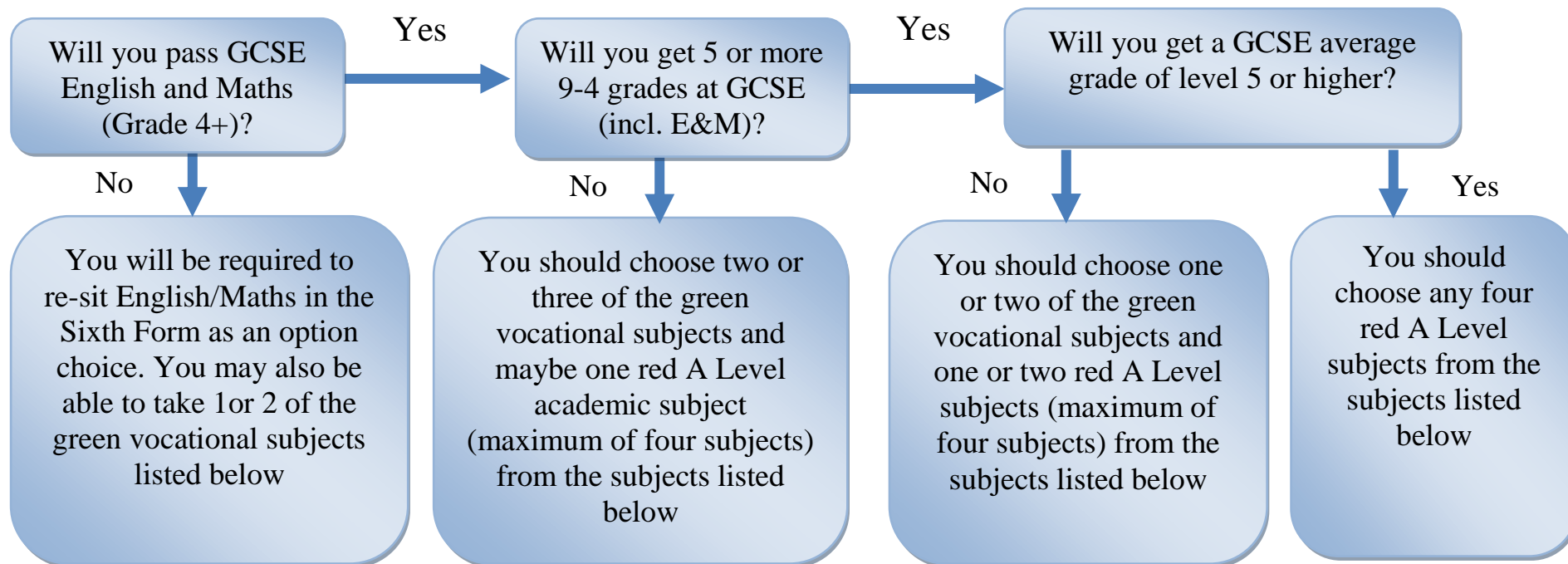
### Stages of application:

1. Students must apply by **3.00pm Monday 19<sup>th</sup> December 2022**
2. Students must attend an application review meeting (in March/April) to discuss initial choices from their application which will be matched to current predicted grades to ensure that choices are realistic and entry requirements are achievable (parents are more than welcome to attend)
3. Students will receive a final letter home in June outlining what the school is prepared to offer them (subject to their GCSE results in August)
4. Induction days will take place in July (dates to be confirmed)
5. On GCSE results day students will confirm their places as well as having a final opportunity to refine their choices

### What GCSEs do I need to take A Levels or vocational courses?

Deciding which subjects, you would like to take can be very difficult. On the next page is a **guide** to help match your predicted achievement at GCSE to the type of courses you can take in the Sixth Form. The options book describes the course and content, as well as the particular requirements needed to gain entry.

## How can I decide what subjects are suitable for me?



| Block 1                   | Block 2                    | Block 3                   | Block 4                |
|---------------------------|----------------------------|---------------------------|------------------------|
| BTEC Health & Social Care | A Level English Literature | A Level Geography         | CTEC Sports Studies    |
| A Level Product Design    | A Level Mathematics        | Level 3 Financial Studies | A Level PE             |
| CTEC Media Studies        | A Level Business Studies   | A Level Biology           | A Level Engineering    |
| BTEC ICT                  | BTEC Business              | BTEC Applied Science      | BTEC Child Development |
| A Level Physics           | BTEC Music                 | BTEC Drama                | A Level Sociology      |
| A Level Art               | A Level Psychology         | A Level Economics         | A Level Chemistry      |
| A Level Politics          | A Level Photography        | BTEC Dance                | A Level Spanish        |
| A Level Accounting        |                            |                           | A Level History        |

Please make sure that you also check the entry criteria for each individual subject and only pick one subject from each block.

## APPLICATION FORM HAILEYBURY TURNFORD SIXTH FORM 2023-2025

PLEASE COMPLETE IN CAPITAL LETTERS

STUDENT NAME: \_\_\_\_\_ DATE OF BIRTH: \_\_\_\_\_

HOME ADDRESS: \_\_\_\_\_

POSTCODE: \_\_\_\_\_ HOME No: \_\_\_\_\_

STUDENT MOBILE No: \_\_\_\_\_ PARENT MOBILE No: \_\_\_\_\_

STUDENT EMAIL: \_\_\_\_\_

PARENT NAME: \_\_\_\_\_ PARENT EMAIL: \_\_\_\_\_

**LEVEL 3 SUBJECT COURSES:**

Please mark **4 choices** of subjects that you wish to study in order of priority.

| Name of qualification      | Number choice | Name of qualification                          | Number choice |
|----------------------------|---------------|--|---------------|
| A Level Accounting         |               | A Level Product Design                         |               |
| A Level Fine Art           |               | A Level Psychology                             |               |
| A Level Biology            |               | A Level Sociology                              |               |
| A Level Business           |               | A Level Spanish                                |               |
| A Level Chemistry          |               | A/S Level Further Mathematics                  |               |
| A Level Economics          |               | BTEC Applied Science                           |               |
| A Level Engineering        |               | BTEC Business                                  |               |
| A Level English Literature |               | BTEC Children's Play, Learning and Development |               |
| A Level Geography          |               | BTEC Dance                                     |               |
| A Level History            |               | CTEC Digital Media                             |               |
| A Level Mathematics        |               | BTEC Drama                                     |               |
| A Level Photography        |               | BTEC Health & Social Care                      |               |
| A Level Physics            |               | CTEC IT  |               |
| A Level PE                 |               | BTEC Music Performance                         |               |
| A Level Politics           |               | Level 3 Financial Studies                      |               |
|                            |               | CTEC Sports Studies                            |               |

### **Additional Information:**

- Please note – you are not signing up to these courses, this is your initial thoughts only and will focus you on finding out more about these options from your teachers and Subject Leaders. Your form tutor is also an excellent person to speak to. Subject choices will not be confirmed until your GCSE results are available.
- Further Mathematics is offered as a fourth A Level. If you are interested in studying this in Year 12, please indicate this on the form as one of your four choices.
- We will also be offering EPQ (Extended Project qualification). This is a qualification that is studied alongside 3 other A Levels. More information will be provided during induction.
- This is not intended to be your final opportunity to choose your subjects for Year 12. As part of planning the curriculum for next year this is a first stage in obtaining information.
- **Please number the four subjects you wish to study, showing them in order of priority. (1 = the subject you most want to take, etc.)**
- Most students will only take three A-levels.
- There is no guarantee that all subjects listed will run or that students will be given all 3/4 choices.

### **Level 2 Courses:**

Should you not perform as well as you had hoped at GCSE then we would also require students to re-sit their GCSE English and Mathematics at level 4 or higher in their Year 12 year. All students will endeavor to leave the Sixth Form with GCSE English and Mathematics level 4. The decision on whether to take these will be made after GCSE Results in August.

Please hand this form back to the Sixth Form Office or Reception before **Monday 19<sup>th</sup> December 2022**. If you have any specific questions, please contact me through the school or preferably by email at [shivalkarn@haileyburyturnford.com](mailto:shivalkarn@haileyburyturnford.com)

We look forward to exploring your future options with us.

Mrs N Shivalkar  
Head of Sixth Form

